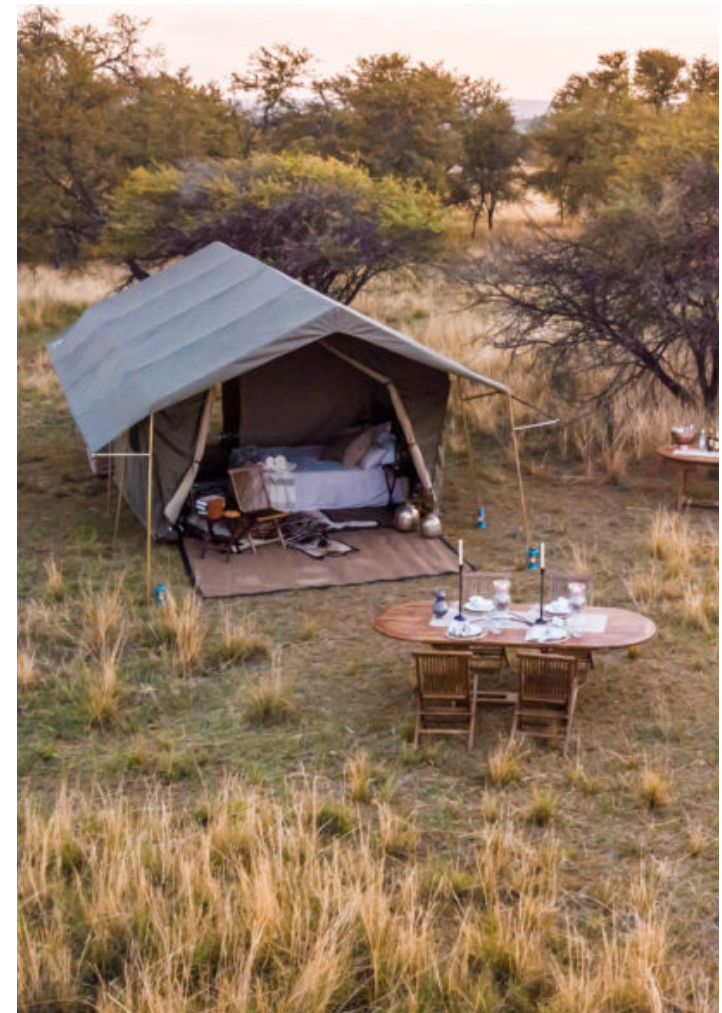
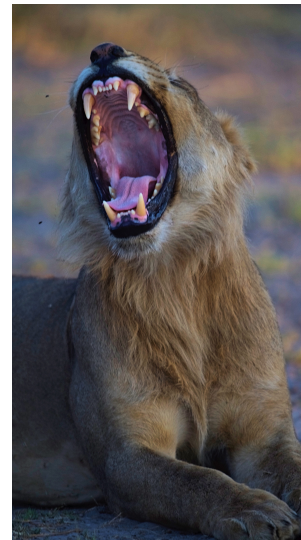




# Your \_\_\_\_\_ Honeymoon





# HONEYMOON

*The Okavango Delta and Central Kalahari, Makgadikgadi, Nxai Pans*

We tailor-make our Honeymoon Safaris

There isn't a better place to spend your first days as Mr and Mrs than in Botswana. Endlessly wild and beautiful, dazzling landscapes peppered with wildlife and our luxury tented mobile camps make for a truly romantic trip.

If you are looking for the perfect place to unwind and focus entirely on enjoying each other's company in the middle of nowhere with not another being in sight (aside from maybe an animal or two), then this is the honeymoon for you.

Semunyaeni offers the ultimate off-the-beaten-track honeymoon packages, where days are spent viewing some of the most incredible wildlife on the planet before candlelit dinners are served under twinkling skies. Experience pure bliss with a relaxing spa treatment or a wine and chocolate tasting whilst enjoying the solitude of this vast wilderness.

If you are considering a really adventurous honeymoon we highly recommend a combination of destinations such as the Central Kalahari, Makgadikgadi Pans and Okavango Delta woven together to surround you in the mesmerising beauty of Botswana.

## DESERT

The Central Kalahari and pans evoke a sense of complete wilderness in an area seemingly untouched by humankind. This is one of Africa's truly unique destinations.

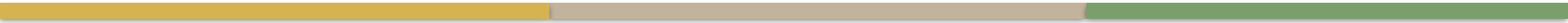
Located in the Kalahari Desert biome in the central part of Botswana, this reserve is the largest conservation area in the country and one of the largest in the world. Its star attractions include the legendary Kalahari black-maned lion as well as some of the world's best cheetah viewing.

The Makgadikgadi and Nxai Pans are the remains of an ancient super lake that is believed to have covered a vast percentage of Southern Africa. The area is a dramatic, desolate expanse of an almost lunar landscape, where you can literally see the curvature of the earth on the horizon.

The (salt) Pans themselves only make up about 20% of the National Park, with the remainder consisting of rolling grasslands. These grasslands are the focal point of a vast zebra migration, second only to the Serengeti's migration herds. To coincide with the largest herds, you will need to travel at the beginning of the year. Another highlight in this desert oasis is the extraordinary sight of the Baines' Baobabs. The cluster of millennia-old baobab trees owes its name to the man known to have discovered them, Thomas Baines, a member of Livingstone's expedition.

## DELTA

The Okavango is the world's only inland delta and is an area of exceptional natural beauty. Its lily-scat-tered flood plains and palm-fringed islands have exceptionally high concentrations of Africa's big game in one of the continent's most beautiful settings. The Okavango is an area that exceeds expectations and would certainly stake its claim as the world's best safari destination.



The Delta offers an excellent selection of safari activities – game drives, night drives, mokoro rides, photographic safaris, and bird watching. The Moremi Game Reserve and Khwai Concession are renowned for their predator concentrations – lion, leopard, cheetah, and wild dog. However, there are plenty of herbivores too, including elephant, buffalo, giraffe, zebra, and huge pods of hippos! And if you are keen birders, you will love looking out for more than 500 types of feathery friends.

## ACCOMMODATION *safari*

Our fully serviced eco-friendly mobile camps are designed to achieve a state of harmony, and a celebration of balance and abundance. Guest accommodation comprises of luxury Meru-style tents. These are spacious and with all the amenities you could desire for a comfortable stay, such as a king size bed, Egyptian cotton bedding, and en-suite facilities including flush toilet and bucket shower!

## HIGHLIGHTS

- Intimate safari experience
  - Mobile spa
  - Candle light dinners
  - Romantic picnic style brunch
- Safari specialty wine pairings with various delicacies such as African crafted nougat



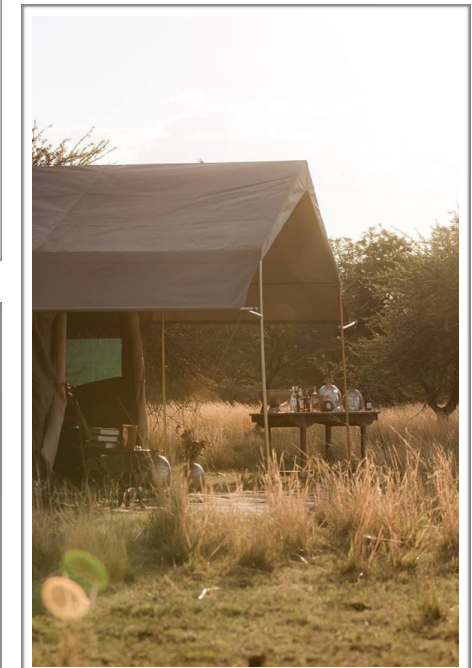
# Our Glamping Accommodation...



*Semunyaeni*  
*Botswana Mobile Safari*



— The ultimate —  
**TAILOR-MADE**  
— experience —





*Some of the wildlife...*

